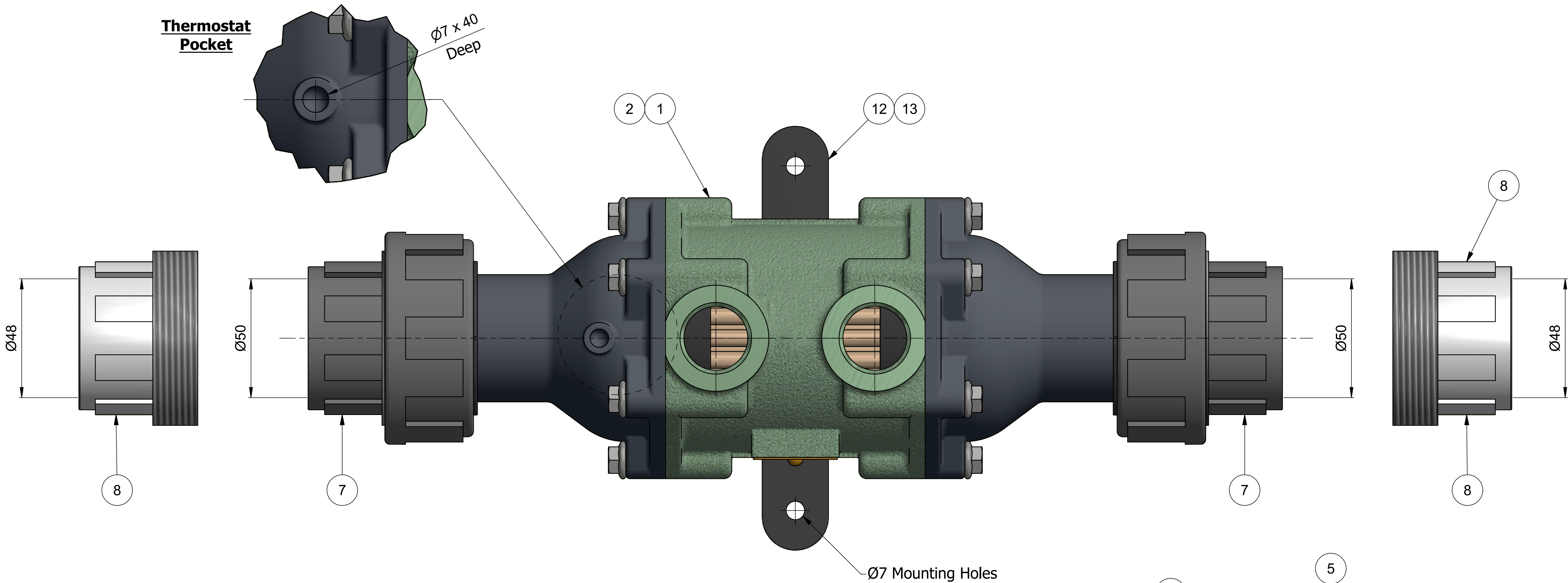
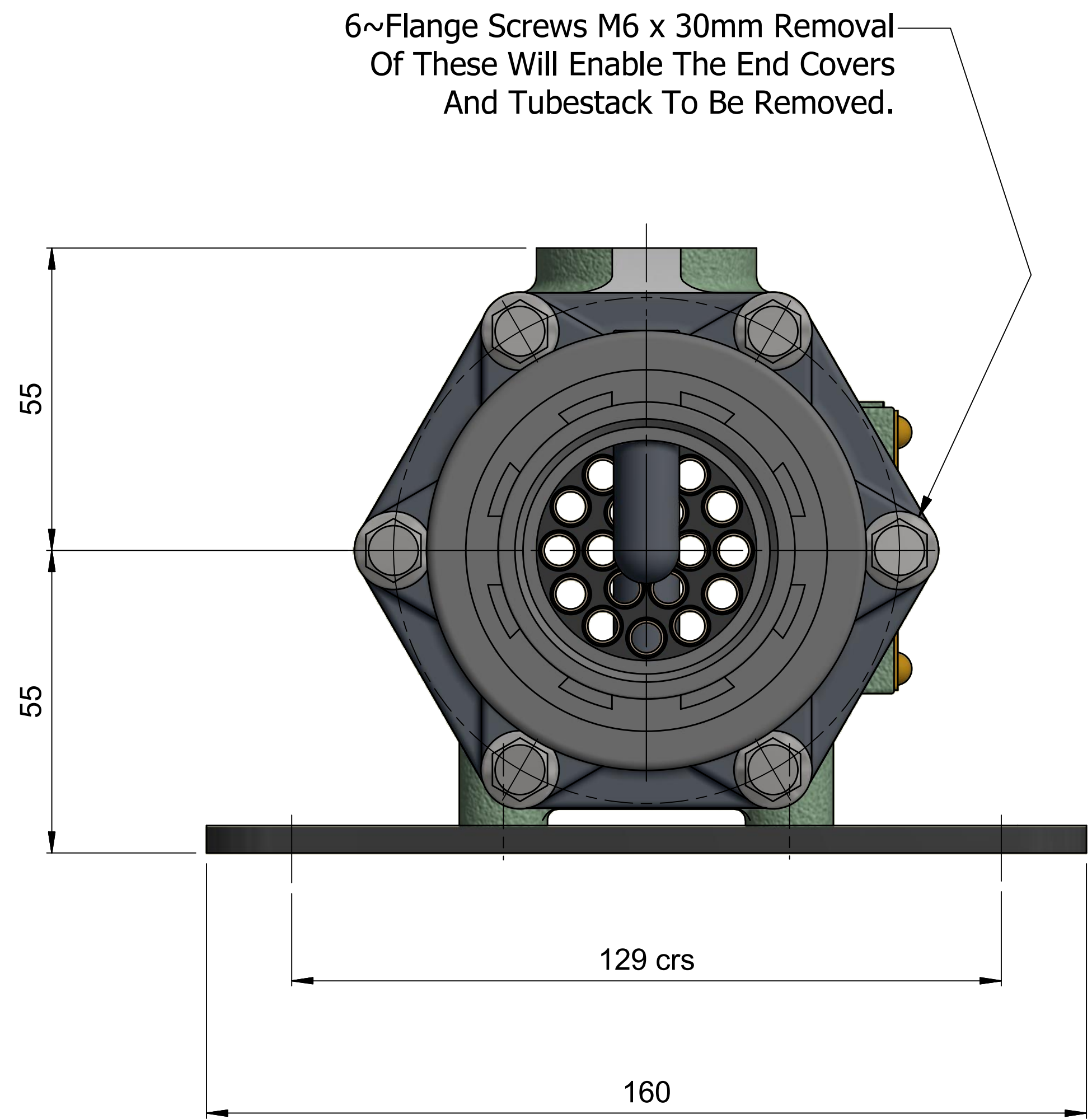
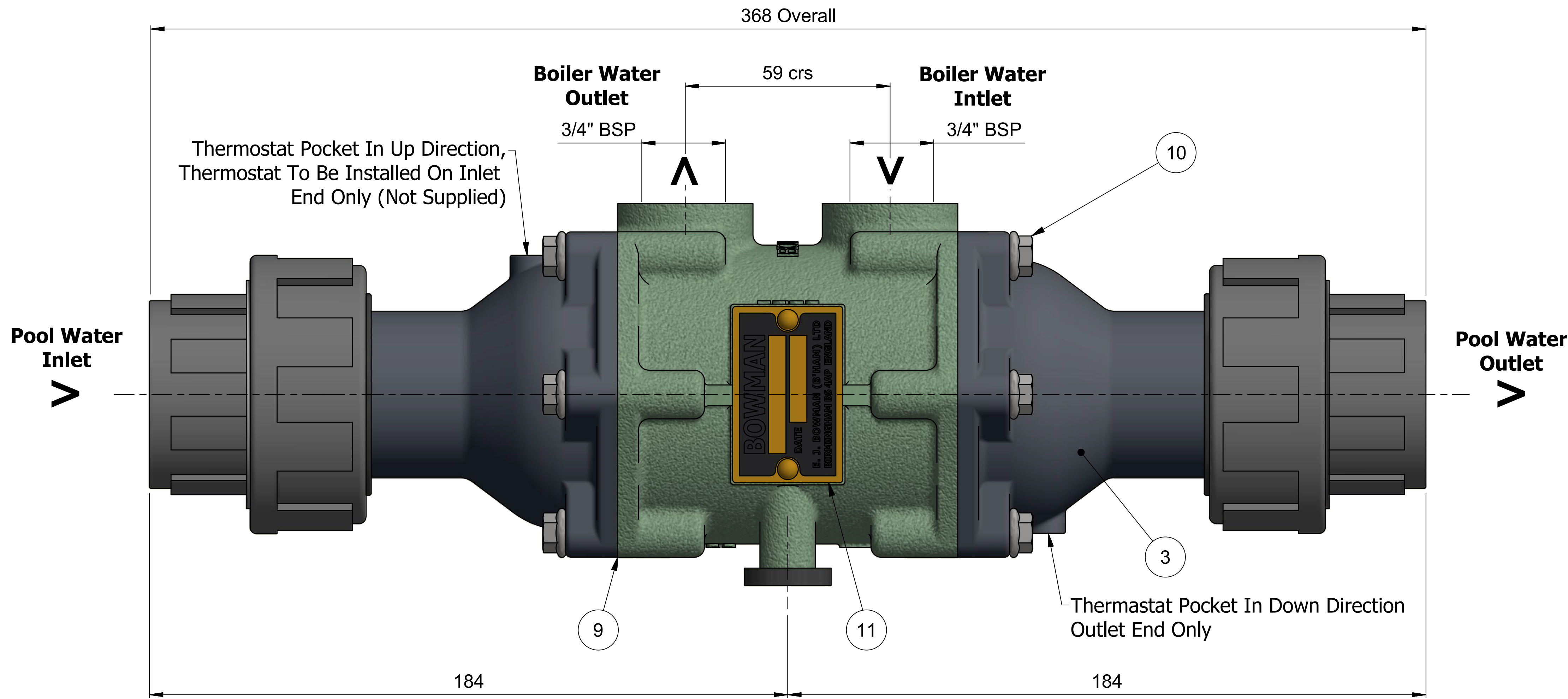


ISS No	MODIFICATION	DATE	SIGN	THIS DRAWING IS STRICTLY PRIVATE AND CONFIDENTIAL. IT IS SUBJECT TO BOTH COPYRIGHT AND DESIGN RIGHT PROTECTION. ANY REPRODUCTION OF THIS DRAWING IN PART OR WHOLE SHALL BE MADE ONLY WITH THE WRITTEN CONSENT OF A DIRECTOR OF THE COMPANY.
2	Thermostat/Pocket Notes Added To Inlet & Outlet End	20/07/15	J. SWAIN	
3	Items Supplied Loose Note Corrected (Items 8, 12 & 13 Supplied Loose)	26/11/15	J. SWAIN	

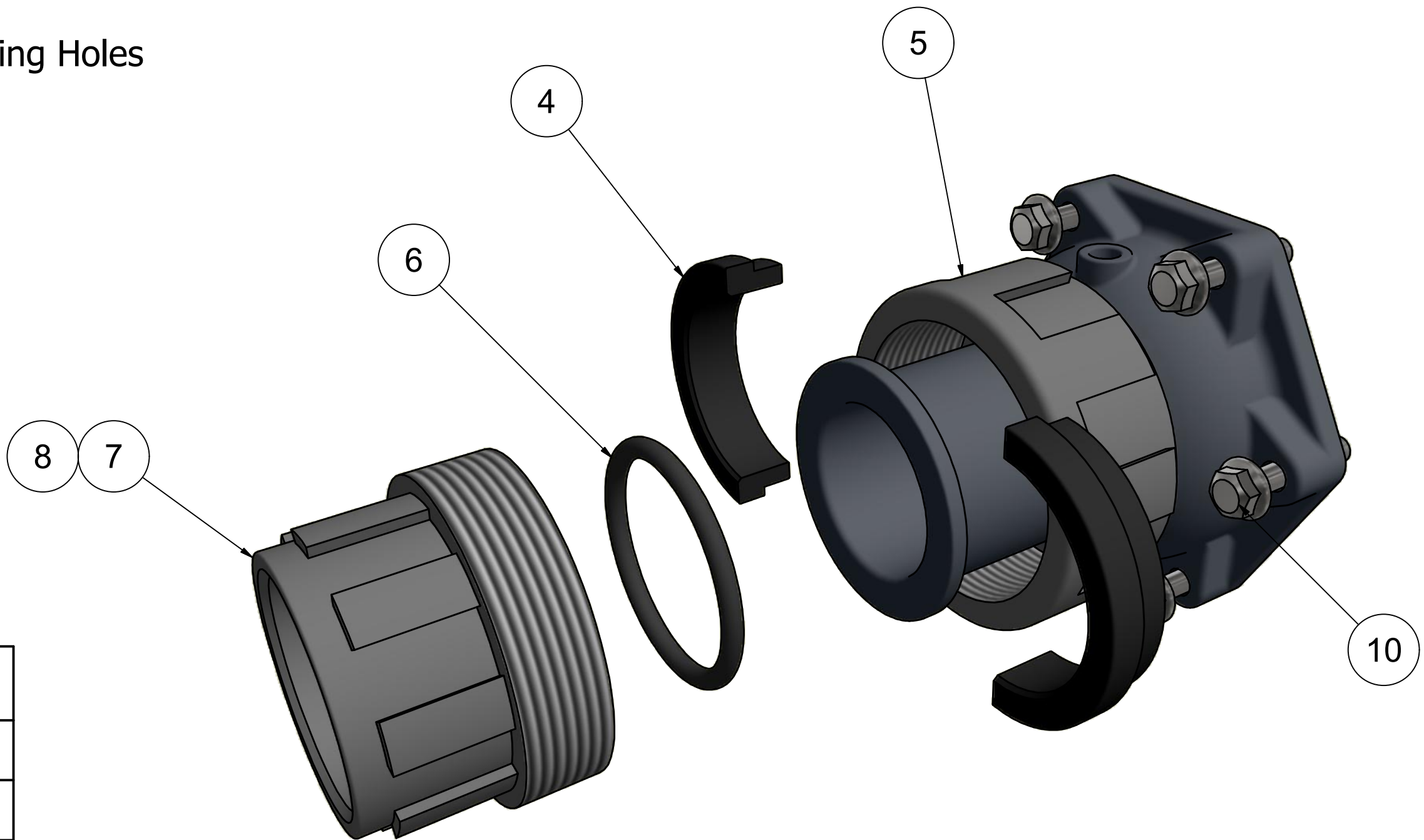


Notes:
Item No's 8, 12 & 13 Supplied Loose With Assembly.
4~M6 x 12 Socket Screws Supplied Fitted Into Mounting Feet
* Drawing Number Suffix To Indicate Tube Material, C = Cupronickel
Tube, S = Stainless Steel Tube And T = Titanium Tube
End Cover Screw Tightening Torque 8Nm



M6 x 12		4	Countersunk Screws	13	MS
5032-1		2	Mounting Feet	12	GFN
3594	3594	1	Nameplate	11	Brass
FS06X30	-	12	Flange Screws	10	MS
AN12NT	3297	2	Seals	9	Nitrile
5131	-	2	Union Bush (BS)	8	UPVC
5130	-	2	Union Bush (Metric)	7	UPVC
5133	-	2	Union Seal	6	EPDM
5132	-	2	Union Nuts	5	UPVC
4571	4571	4	Split Rings	4	GFN
4567	4567	2	End Covers	3	GFN
See Table	5095	1	Tubestck EC80	2	*
EC069-5568-1CI	5568-1	1	Body EC80	1	CI
Part No.	Drg No.	Qty	Description	Item	Material

Assembly No.	Tubestack Part No.
EC080-5113-1C	5095-1TNP
EC080-5113-1S	5095-1STP
EC080-5113-1T	5095-1TIP



ALL DIMENSIONS ARE IN MILLIMETRES

DRAWN:	A.TAYLOR	TITLE:	Hot Tub / Spa Heat Exchanger
DATE:	27/11/2014		
REDRAWN:			
DATE:			
CHECKED:		DRG No:	5102-1
SCALE:	1:1		